

Porroglossum jesupiae Luer, sp. nov.

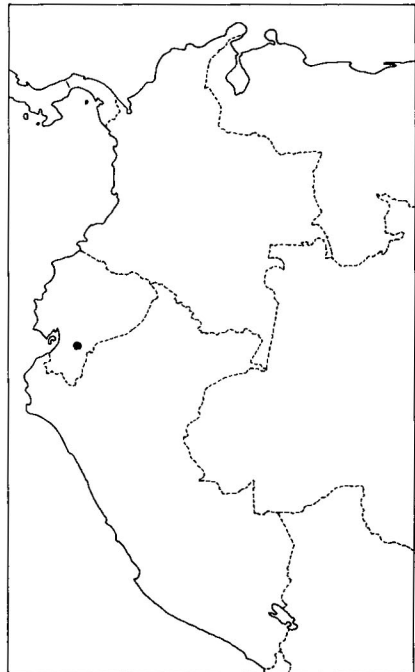
Ety.: Named in honor of Ann Lauer Jesup of Bristol, Ct., who discovered this species.

Species haec *P. dactylo* Luer similis, sed foliis obovatis obtusis, flore resupinato, sepalorum caudis erectis guttatis longioribus et labello majore differt.

Plant medium in size, epiphytic, caespitose; roots slender. Ramicauls blackish, slender, erect, 5-10 mm long, enclosed by 2-3 tubular sheaths. **Leaf** erect, thickly coriaceous, finely verrucose, 3-6 cm long including a petiole 1-2 cm long, the blade elliptical-obovate, obtuse, 11-16 mm wide, the base cuneate into the slender petiole. **Inflorescence** a congested, successively few-flowered raceme, the flowers resupinate, borne by an erect, smooth, slender peduncle 7-8.5 cm long, with 3 closely applied, distant bracts, from low on the ramicaul; floral bracts tubular, imbricating, 4-7 mm long; pedicel 4-7 mm long; ovary twisted 180°, pitted, 4.5 mm long; **sepals** purple with darker veins, glabrous, the middle sepal ovate, deeply concave, 9 mm long, 5 mm wide unexpanded, connate to the lateral sepals for 5 mm, the acute apex contracted into a thick, ascending tail 8 mm long, yellow with purple spots, the lateral sepals transversely oblong, 6 mm long, 8 mm wide, connate to each other 5 mm behind the free apex of the column-foot, the broadly obtuse apices abruptly contracted into thick, erect, tails 12 mm long, also yellow with purple spots; **petals** yellow, ovate-oblong, 4.5 mm long, 1-3 mm wide, narrowed below the thickened apex, both margins with an acute process in the middle third; **lip** lowermost, white, suffused with purple at the base, with purple markings above the base, ciliate on anterior margins, the blade obovate, thick, truncate, 6 mm long, 4 mm wide, the lateral angles rounded, the apex a short, acute, sulcate apiculum, pubescent within the sulcus, the base with a low, pyramidal callus, deflexed below into a straplike claw bent with tension around the free apex of the column-foot; **column** stout, semiterete, 2.5 mm long, the foot 5 mm long.

ECUADOR: Prov. of Morona-Santiago: epiphytic in felled tree in a pasture beside the road above Río Calagrás, alt. 1550 m, 19 Jan. 1989, C. Luer, J. Luer, P. Jesup & A. Jesup 14007 (Holotype: MO).

This species of section *Torta*, was discovered growing on a mossy old log in a cow pasture by Ann Jesup. It is similar to *P. dactylum* and *P. dalstroemii*, but *P. jesupiae* is readily distinguished by the larger, resupinate flower with long, erect, spotted tails of the lateral sepals. The ovary of all three of these allied species is twisted 180°, placing the lip lowermost in the flower. The lip remains uppermost in the other two species, probably from an additional backward bending of the pedicels.



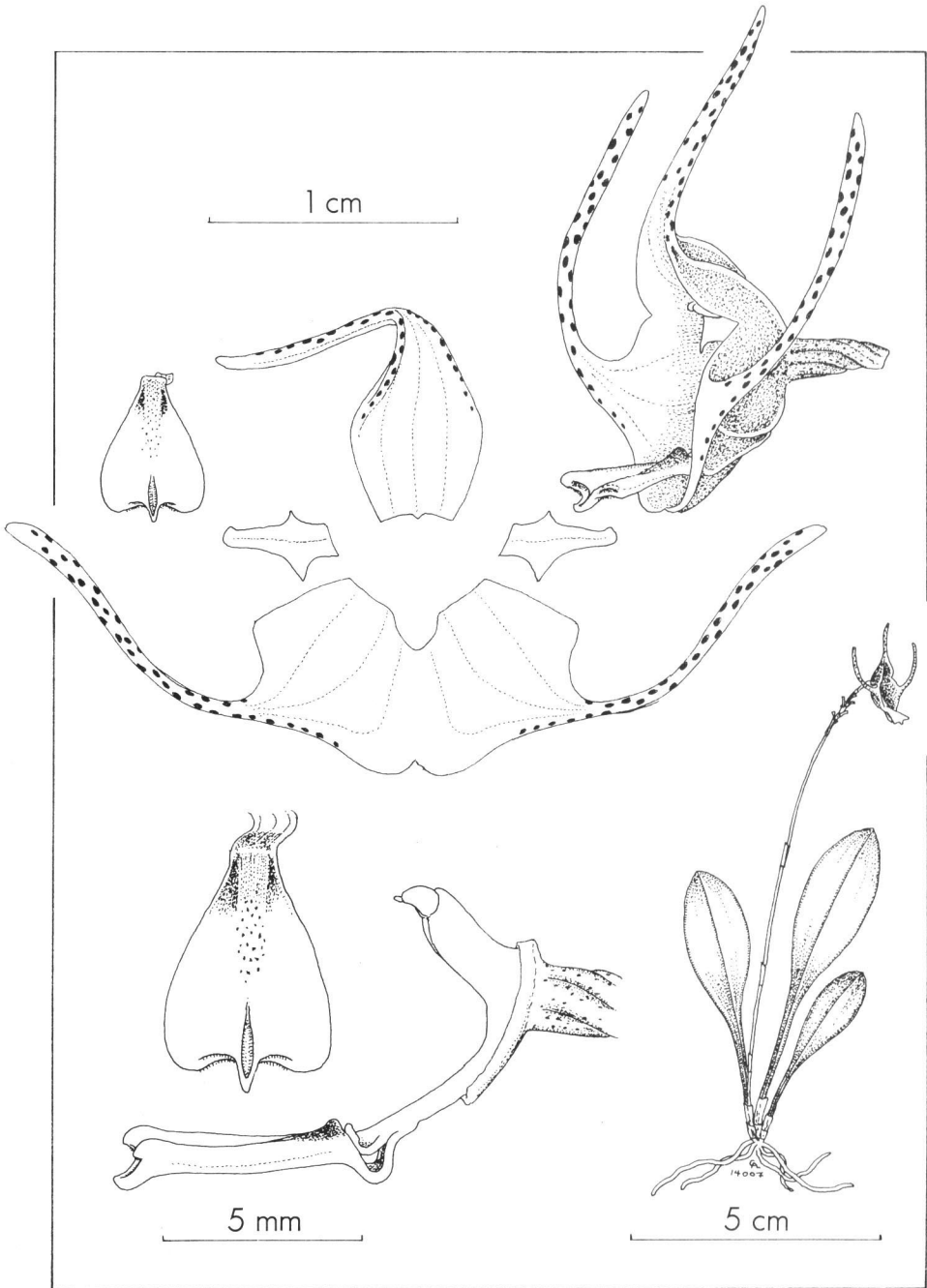


Plate 32. *Porroglossum jesupiae* Luer